

MONTHLY MEMBERSHIP PROGRESS REPORT

LOCATION FLORIDA

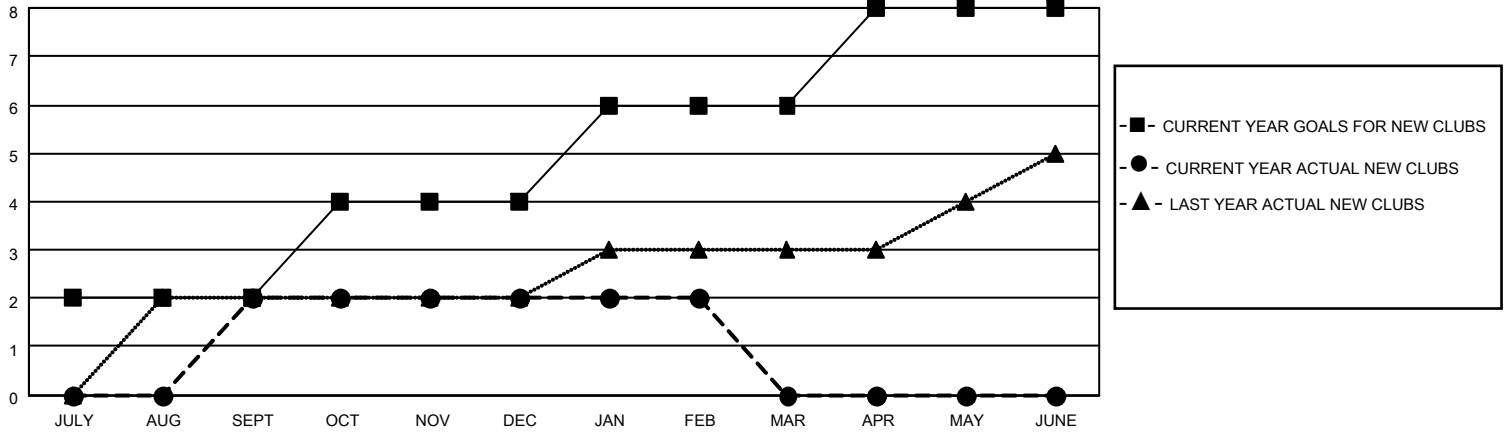
District 35 L

Results as of: 2/28/2023

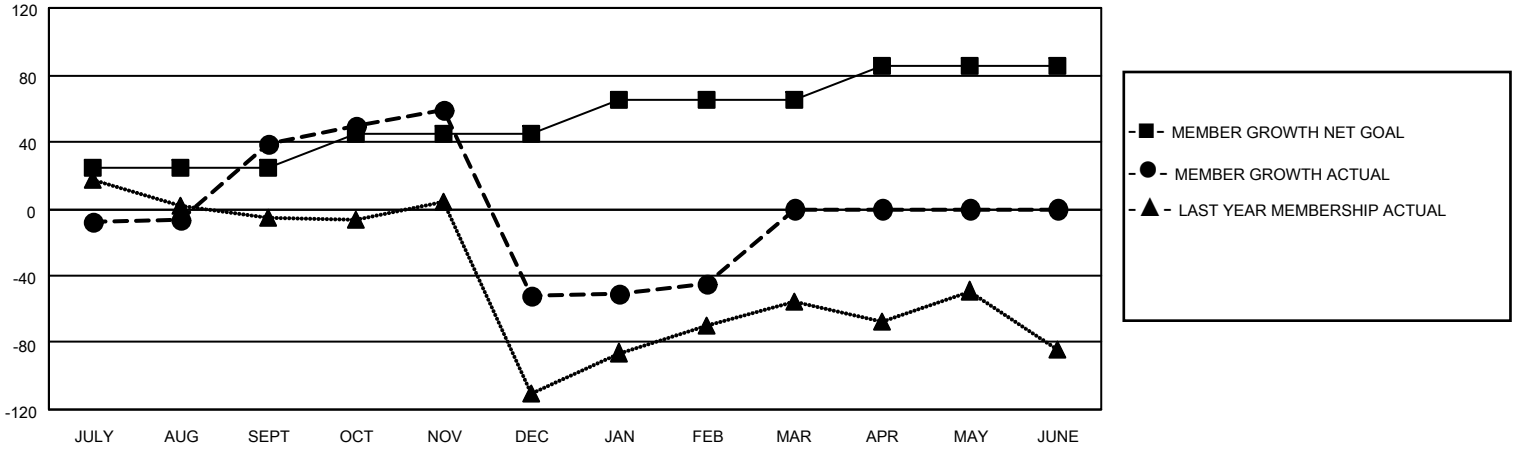
Clubs			
RESULTS FOR 2022-2023			
QUARTER	NEW CLUB GOAL	NEW CLUBS	DROPPED CLUBS
JULY/AUG/SEPT	2	2	3
OCT/NOV/DEC	2	0	4
JAN/FEB/MAR	2	0	0
APR/MAY/JUNE	2	0	0

Members			
RESULTS FOR 2022-2023			
QUARTER	MEMBER GROWTH NET GOAL	MEMBER GROWTH ACTUAL	DROPPED MEMBERS ACTUAL (including transfers)
JULY/AUG/SEPT	25	96	40
OCT/NOV/DEC	20	58	141
JAN/FEB/MAR	20	55	32
APR/MAY/JUNE	20	0	0

GOALS AND ACTUAL NEW CLUBS CUMULATIVE



GOALS AND ACTUAL MEMBERS CUMULATIVE



DROPPED CLUBS: 7

40 CLUBS OF 65 ADDED 1 OR MORE NEW MEMBERS

GENDER DISTRIBUTION

DROPPED MEMBERS

DECEASED	14
CLUB CANCELLED	36
OTHER	163
TOTAL	213

[CLICK HERE FOR CUMULATIVE MEMBERSHIP DATA](#)

MALE	707 (59.02%)
FEMALE	489 (40.82%)
NON BINARY	1 (0.08%)
PREFER NOT TO ANSWER	1 (0.08%)

TOTAL FAMILY UNIT MEMBERS 253

FAMILY MEMBERS PAYING HALF DUES 127